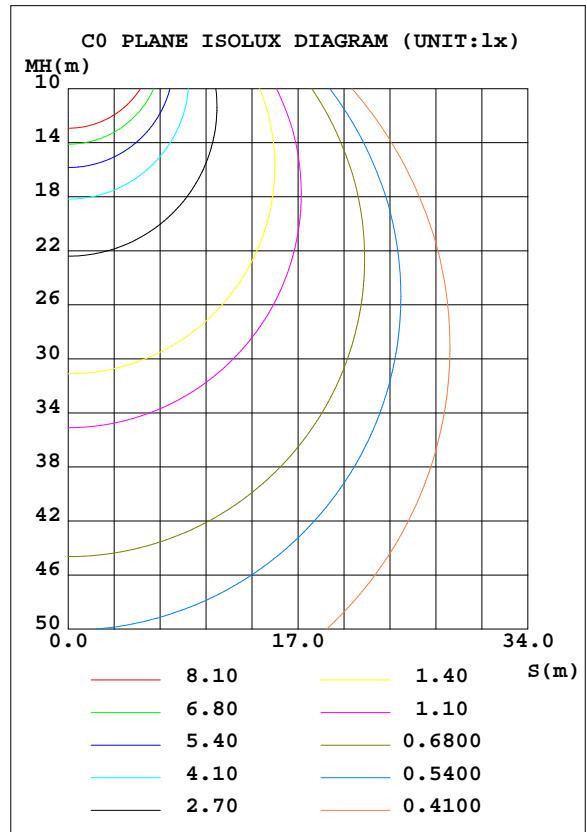
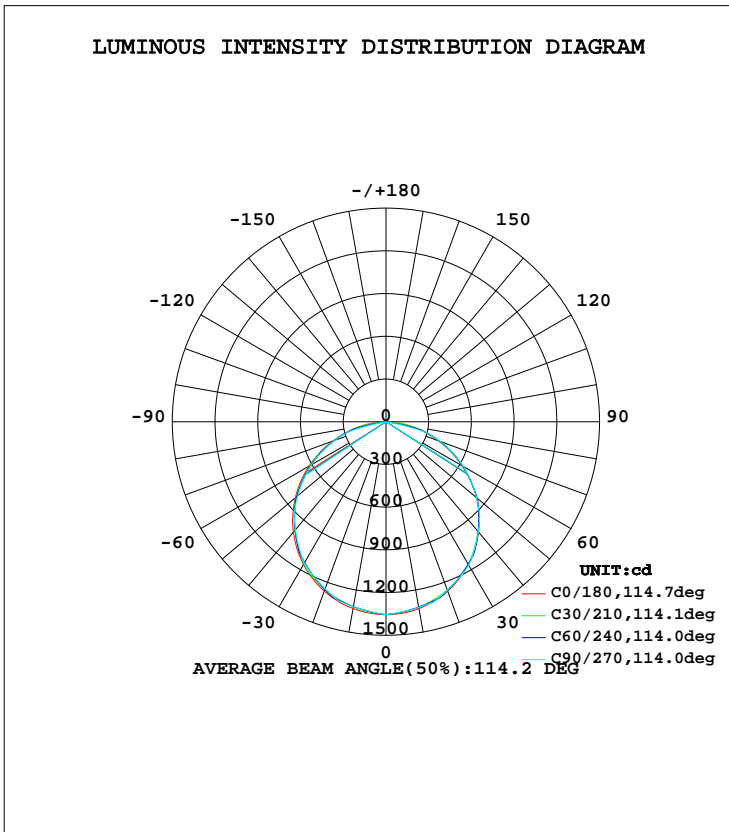


LUMINAIRE PHOTOMETRIC TEST REPORT

Test:U:229.9V I:0.1395A P:31.35W PF:0.9778 Lamp Flux:3896.71x1 lm		
NAME: IL-PN195 4.000K	TYPE:	WEIGHT:
SPEC.:	DIM.:	SERIAL No.:
MFR.: EVERFINE	SUR.:250*1150	PROTECTION ANGLE:

DATA OF LAMP		PHOTOMETRIC DATA Eff: 124.28 lm/W			
MODEL	IL-PN195 4.000K	Imax(cd)	1355	S/MH(C0/180)	1.27
NOMINAL POWER(W)	30	LOR(%)	100.0	S/MH(C90/270)	1.26
RATED VOLTAGE(V)	230	TOTAL FLUX(lm)	3896.7	η UP, DN(C0-180)	0.0, 50.4
NOMINAL FLUX(lm)	3896.71	CIE CLASS	DIRECT	η UP, DN(C180-360)	0.0, 49.6
LAMPS INSIDE	1	η up(%)	0.0	CIBSE SHR NOM	1.25
TEST VOLTAGE(V)	230	η down(%)	100.0	CIBSE SHR MAX	1.35



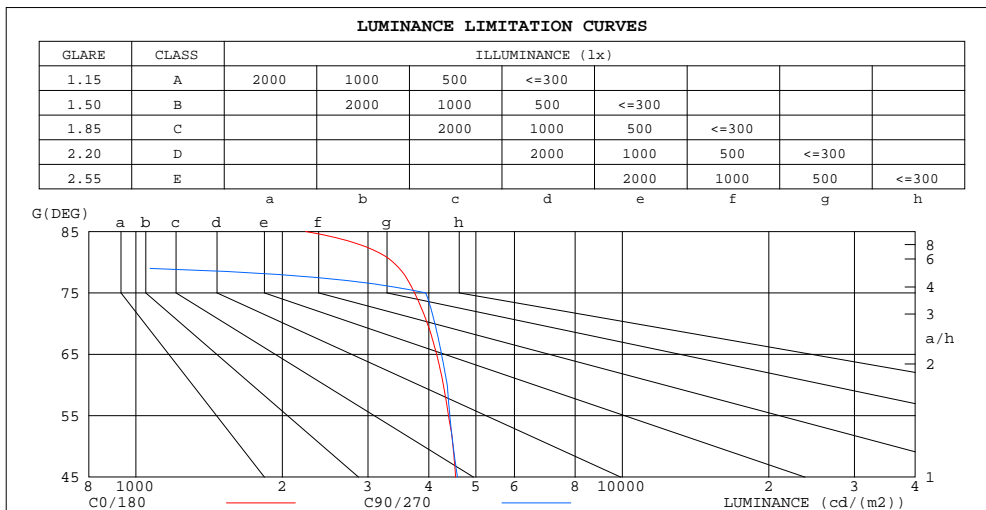
C Range: 0 - 360DEG
 C Interval: 5.0DEG
 Test Speed: HIGH
 Temperature:25.3DEG
 Operators:DAMIN
 Test Date:2023-8-8

γ Range: 0 - 90DEG
 γ Interval: 0.5DEG
 Test System:EVERFINE GO-2000A_V1 SYSTEM V2.0.286
 Humidity:65.0%
 Test Distance:13.420m [K=1.0000]
 Remarks: IL-PN195 4.000K

ZONAL FLUX DIAGRAM
AND LUMINANCE LIMITATION CURVES

ZONAL FLUX DIAGRAM:

γ	C0	C45	C90	C135	C180	C225	C270	C315	γ	Φ zone	Φ total	#lum,lamp
5	1349	1341	1339	1341	1349	1339	1336	1339	0- 5	32.18	32.18	0.83,0.83
10	1332	1321	1324	1322	1332	1318	1318	1317	5- 10	95.22	127.4	3.27,3.27
15	1305	1296	1308	1297	1305	1292	1300	1291	10- 15	155.3	282.7	7.26,7.26
20	1266	1267	1260	1268	1266	1261	1249	1259	15- 20	210.6	493.4	12.7,12.7
25	1217	1212	1211	1214	1217	1205	1198	1203	20- 25	258.5	751.8	19.3,19.3
30	1158	1151	1163	1151	1158	1141	1148	1139	25- 30	298.3	1050	26.9,26.9
35	1089	1086	1086	1086	1089	1074	1069	1073	30- 35	328.6	1379	35.4,35.4
40	1011	1015	1008	1015	1012	1002	990.1	1000	35- 40	347.5	1726	44.3,44.3
45	923.4	921.9	931.2	922.7	925.6	908.9	911.2	906.5	40- 45	355.4	2082	53.4,53.4
50	829.1	827.9	830.0	829.5	831.6	814.2	808.9	811.7	45- 50	351.9	2433	62.4,62.4
55	724.0	733.4	728.9	733.5	731.0	718.2	706.7	715.9	50- 55	335.7	2769	71.1,71.1
60	616.2	621.5	627.7	622.3	623.7	606.9	604.4	603.6	55- 60	308.7	3078	79,79
65	504.5	511.9	516.3	513.0	512.3	497.7	493.4	493.6	60- 65	272.2	3350	86,86
70	390.7	401.8	404.9	403.0	399.4	388.1	382.4	383.8	65- 70	227.4	3577	91.8,91.8
75	278.4	290.8	293.5	292.1	286.7	278.2	271.4	273.7	70- 75	176.5	3754	96.3,96.3
80	168.7	158.2	0	159.4	178.2	148.8	0	145.2	75- 80	108.9	3863	99.1,99.1
85	55.88	0	0	0	64.94	0	0	0	80- 85	30.93	3894	99.9,99.9
90	0.6410	0	0	0	0.8739	0	0	0	85- 90	2.898	3897	100,100
95									90- 95			
100									95-100			
105									100-105			
110									105-110			
115									110-115			
120									115-120			
125									120-125			
130									125-130			
135									130-135			
140									135-140			
145									140-145			
150									145-150			
155									150-155			
160									155-160			
165									160-165			
170									165-170			
175									170-175			
180									175-180			
DEG	LUMINOUS INTENSITY:cd									UNIT:lm		



LUMINANCE cd/(m2)		
G(DEG)	C0/180	C90/270
85	2230	0
80	3379	0
75	3741	3945
70	3973	4118
65	4152	4249
60	4286	4367
55	4391	4420
50	4486	4491
45	4542	4580

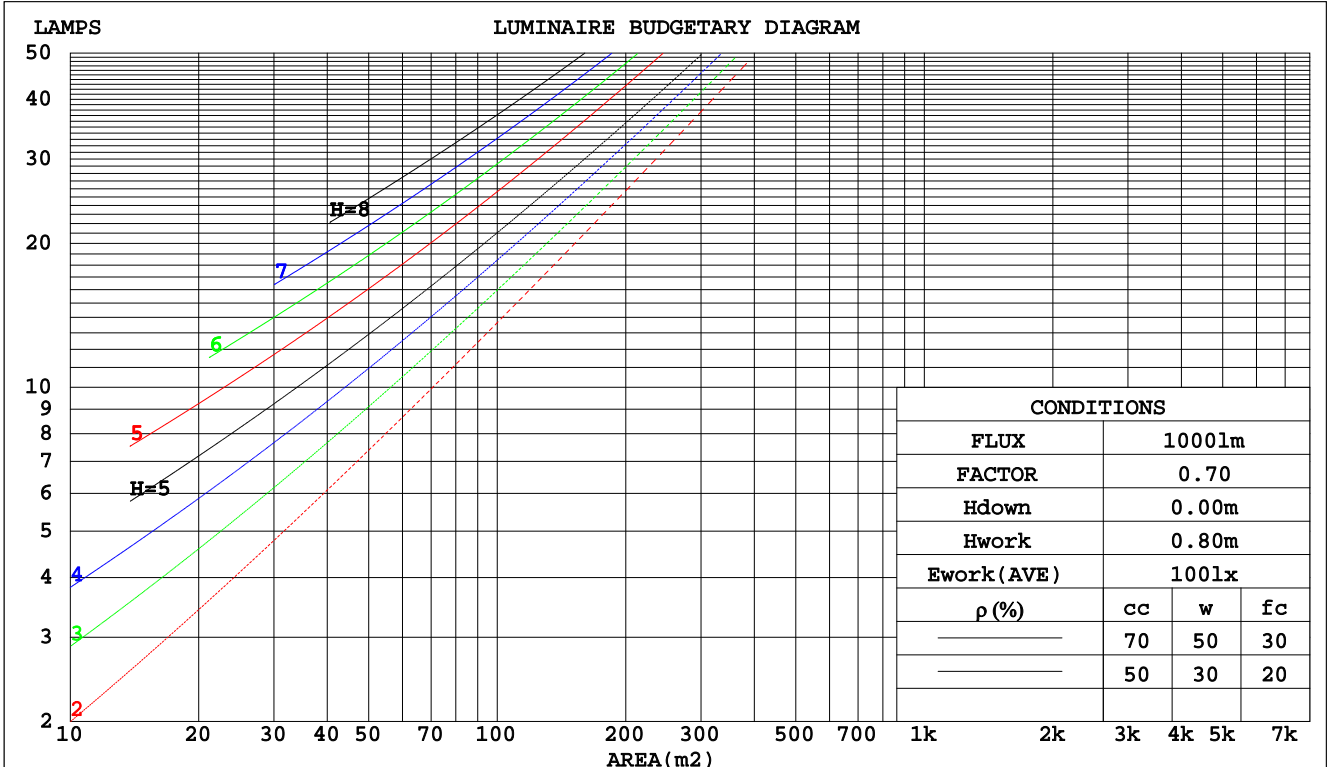
C Range: 0 - 360DEG
C Interval: 5.0DEG
Test Speed: HIGH
Temperature:25.3DEG
Operators:DAMIN
Test Date:2023-8-8

γ Range: 0 - 90DEG
γ Interval: 0.5DEG
Test System:EVERFINE GO-2000A_V1 SYSTEM V2.0.286
Humidity:65.0%
Test Distance:13.420m [K=1.0000]
Remarks: IL-PN195 4.000K

CU AND LUMINAIRE BUDGETARY ESTIMATE DIAGRAM

Test:U:229.9V I:0.1395A P:31.35W PF:0.9778 Lamp Flux:3896.7lx1 lm		
NAME: IL-PN195 4.000K	TYPE:	WEIGHT:
SPEC.:	DIM.:	SERIAL No.:
MFR.: EVERFINE	SUR.:250*1150	PROTECTION ANGLE:

pcc	80%			70%			50%			30%			10%			0
	50%	30%	10%	50%	30%	10%	50%	30%	10%	50%	30%	10%	50%	30%	10%	0
pw																0
pfc	20%			20%			20%			20%			20%			0
RCR	RCR:Room Cavity Ratio															
	Coefficients of Utilization(CU)															
0.0	1.19	1.19	1.19	1.16	1.16	1.16	1.11	1.11	1.11	1.06	1.06	1.06	1.02	1.02	1.02	1.00
1.0	1.04	1.00	.96	1.02	.98	.95	.98	.95	.92	.94	.91	.89	.90	.88	.86	.84
2.0	.91	.84	.78	.89	.83	.77	.85	.80	.75	.82	.78	.74	.79	.75	.72	.70
3.0	.79	.71	.65	.78	.70	.64	.75	.68	.63	.72	.67	.62	.70	.65	.61	.59
4.0	.70	.61	.55	.69	.61	.54	.66	.59	.54	.64	.58	.53	.62	.57	.52	.50
5.0	.63	.54	.47	.62	.53	.47	.59	.52	.46	.57	.51	.46	.56	.50	.45	.43
6.0	.56	.47	.41	.55	.47	.41	.54	.46	.40	.52	.45	.40	.50	.44	.40	.38
7.0	.51	.42	.36	.50	.42	.36	.49	.41	.36	.47	.40	.35	.46	.40	.35	.33
8.0	.47	.38	.32	.46	.38	.32	.45	.37	.32	.43	.37	.32	.42	.36	.31	.29
9.0	.43	.34	.29	.42	.34	.29	.41	.34	.29	.40	.33	.28	.39	.33	.28	.26
10.0	.39	.31	.26	.39	.31	.26	.38	.31	.26	.37	.30	.26	.36	.30	.26	.24



C Range: 0 - 360DEG
C Interval: 5.0DEG
Test Speed: HIGH
Temperature:25.3DEG
Operators:DAMIN
Test Date:2023-8-8

γ Range: 0 - 90DEG
γ Interval: 0.5DEG
Test System:EVERFINE GO-2000A_V1 SYSTEM V2.0.286
Humidity:65.0%
Test Distance:13.420m [K=1.0000]
Remarks: IL-PN195 4.000K

WEC AND CCEC

Test:U:229.9V I:0.1395A P:31.35W PF:0.9778 Lamp Flux:3896.71x1 lm		
NAME: IL-PN195 4.000K	TYPE:	WEIGHT:
SPEC.:	DIM.:	SERIAL No.:
MFR.: EVERFINE	SUR.:250*1150	PROTECTION ANGLE:

ρcc	80%			70%			50%			30%			10%			0
ρw	50%	30%	10%	50%	30%	10%	50%	30%	10%	50%	30%	10%	50%	30%	10%	0
ρfc	20%			20%			20%			20%			20%			0
RCR	RCR:Room Cavity Ratio						Wall Exitance Coefficients(WEC)									
0.0																
1.0	.303	.172	.055	.296	.169	.054	.282	.162	.052	.270	.156	.050	.259	.150	.048	
2.0	.289	.159	.049	.283	.156	.048	.271	.151	.047	.261	.146	.046	.251	.142	.045	
3.0	.269	.143	.043	.264	.141	.043	.253	.137	.042	.244	.134	.041	.235	.130	.040	
4.0	.249	.129	.038	.244	.128	.038	.235	.125	.037	.227	.122	.037	.219	.119	.036	
5.0	.231	.117	.034	.226	.116	.034	.218	.114	.033	.210	.111	.033	.203	.109	.033	
6.0	.214	.107	.031	.210	.106	.031	.203	.104	.030	.196	.102	.030	.190	.100	.030	
7.0	.199	.098	.028	.196	.098	.028	.189	.096	.028	.183	.094	.027	.177	.092	.027	
8.0	.186	.091	.026	.183	.090	.025	.177	.089	.025	.172	.087	.025	.167	.086	.025	
9.0	.174	.084	.024	.172	.084	.023	.166	.082	.023	.161	.081	.023	.157	.080	.023	
10.0	.164	.079	.022	.161	.078	.022	.157	.077	.022	.152	.076	.022	.148	.075	.021	

ρcc	80%			70%			50%			30%			10%			0
ρw	50%	30%	10%	50%	30%	10%	50%	30%	10%	50%	30%	10%	50%	30%	10%	0
ρfc	20%			20%			20%			20%			20%			0
RCR	RCR:Room Cavity Ratio						Ceiling Cavity Exitance Coefficients(CCEC)									
0.0	.190	.190	.190	.163	.163	.163	.111	.111	.111	.064	.064	.064	.020	.020	.020	
1.0	.180	.156	.135	.154	.134	.116	.105	.092	.080	.061	.053	.047	.019	.017	.015	
2.0	.172	.132	.098	.147	.114	.085	.101	.079	.059	.058	.046	.035	.019	.015	.011	
3.0	.164	.114	.074	.141	.099	.065	.097	.068	.045	.056	.040	.027	.018	.013	.009	
4.0	.157	.101	.058	.135	.087	.051	.093	.061	.036	.054	.036	.021	.017	.012	.007	
5.0	.149	.091	.047	.128	.078	.041	.088	.055	.029	.051	.032	.017	.017	.010	.006	
6.0	.142	.082	.039	.122	.071	.034	.084	.050	.024	.049	.029	.014	.016	.010	.005	
7.0	.136	.075	.033	.117	.065	.029	.081	.046	.020	.047	.027	.012	.015	.009	.004	
8.0	.129	.070	.029	.111	.060	.025	.077	.042	.018	.045	.025	.011	.014	.008	.003	
9.0	.123	.065	.025	.106	.056	.022	.073	.039	.016	.043	.023	.009	.014	.008	.003	
10.0	.117	.060	.022	.101	.052	.020	.070	.037	.014	.041	.022	.008	.013	.007	.003	

C Range: 0 - 360DEG
 C Interval: 5.0DEG
 Test Speed: HIGH
 Temperature:25.3DEG
 Operators:DAMIN
 Test Date:2023-8-8

γ Range: 0 - 90DEG
 γ Interval: 0.5DEG
 Test System:EVERFINE GO-2000A_V1 SYSTEM V2.0.286
 Humidity:65.0%
 Test Distance:13.420m [K=1.0000]
 Remarks: IL-PN195 4.000K

UGR(Unified Glare Rating) Table

Test:U:229.9V I:0.1395A P:31.35W PF:0.9778 Lamp Flux:3896.7lx1 lm										
NAME: IL-PN195 4.000K					TYPE:			WEIGHT:		
SPEC.:					DIM.:			SERIAL No.:		
MFR.: EVERFINE					SUR.:250*1150			PROTECTION ANGLE:		
ceiling/cavity	0.7	0.7	0.5	0.5	0.3	0.7	0.7	0.5	0.5	0.3
walls	0.5	0.3	0.5	0.3	0.3	0.5	0.3	0.5	0.3	0.3
working plane	0.2	0.2	0.2	0.2	0.2	0.2	0.2	0.2	0.2	0.2
Room dimensions	Viewed crosswise					Viewed endwise				
x = 2H y = 2H	18.1	19.6	18.4	19.8	20.0	18.2	19.7	18.4	19.9	20.1
3H	19.7	21.1	20.0	21.3	21.6	19.8	21.2	20.1	21.4	21.7
4H	20.3	21.7	20.6	21.9	22.2	20.5	21.8	20.8	22.1	22.3
6H	20.8	22.0	21.1	22.3	22.6	20.5	21.8	20.9	22.1	22.4
8H	20.9	22.1	21.2	22.4	22.7	20.5	21.7	20.8	22.0	22.3
12H	20.9	22.1	21.3	22.4	22.7	20.4	21.6	20.8	21.9	22.2
4H 2H	18.8	20.1	19.1	20.3	20.6	18.8	20.2	19.1	20.4	20.7
3H	20.5	21.7	20.9	22.0	22.3	20.6	21.8	21.0	22.1	22.4
4H	21.3	22.4	21.7	22.7	23.0	21.4	22.5	21.8	22.8	23.2
6H	21.9	22.8	22.3	23.2	23.6	21.6	22.5	22.0	22.9	23.2
8H	22.1	23.0	22.5	23.3	23.7	21.5	22.4	21.9	22.8	23.1
12H	22.2	23.0	22.6	23.4	23.8	21.5	22.3	21.9	22.7	23.1
8H 4H	21.6	22.5	22.0	22.9	23.2	21.7	22.6	22.1	23.0	23.4
6H	22.4	23.1	22.8	23.5	23.9	21.9	22.6	22.3	23.0	23.5
8H	22.7	23.3	23.1	23.7	24.2	21.9	22.5	22.3	22.9	23.4
12H	22.8	23.4	23.3	23.8	24.3	21.8	22.4	22.3	22.8	23.3
12H 4H	21.6	22.4	22.0	22.8	23.2	21.7	22.6	22.2	22.9	23.3
6H	22.4	23.0	22.8	23.4	23.9	21.9	22.6	22.4	23.0	23.5
8H	22.7	23.2	23.2	23.7	24.2	21.9	22.5	22.4	22.9	23.4
Variations with the observer position at spacings:										
S = 1.0H	+ 0.1 / - 0.2					+ 0.2 / - 0.2				
1.5H	+ 0.2 / - 0.3					+ 0.1 / - 0.2				
2.0H	+ 0.2 / - 0.3					+ 0.2 / - 0.4				

CIE Pub.117 Corrected 3897 lm Total Lamp Luminous Flux.(8log(F/F0) = 4.7)

C Range: 0 - 360DEG
 C Interval: 5.0DEG
 Test Speed: HIGH
 Temperature:25.3DEG
 Operators:DAMIN
 Test Date:2023-8-8

γ Range: 0 - 90DEG
 γ Interval: 0.5DEG
 Test System:EVERFINE GO-2000A_V1 SYSTEM V2.0.286
 Humidity:65.0%
 Test Distance:13.420m [K=1.0000]
 Remarks: IL-PN195 4.000K

UTILIZATION FACTORS TABLE

Test:U:229.9V I:0.1395A P:31.35W PF:0.9778 Lamp Flux:3896.71x1 lm		
NAME: IL-PN195 4.000K	TYPE:	WEIGHT:
SPEC.:	DIM.:	SERIAL No.:
MFR.: EVERFINE	SUR.:250*1150	PROTECTION ANGLE:

REFLECTANCE										
Ceiling	0.8	0.8	0.8	0.7	0.7	0.7	0.5	0.5	0.5	0
Walls	0.7	0.5	0.3	0.7	0.5	0.3	0.7	0.5	0.3	0
Working plane	0.2	0.2	0.2	0.2	0.2	0.2	0.2	0.2	0.2	0
ROOM INDEX	UTILIZATION FACTORS(PERCENT) $k(RI) \times RCR = 5$									
k = 0.60	57	46	39	57	45	39	55	45	38	32
0.80	67	56	48	66	55	48	65	55	48	41
1.00	76	65	57	75	64	57	72	66	57	49
1.25	83	73	65	82	72	65	79	70	64	57
1.50	88	78	71	86	77	71	83	76	70	62
2.00	95	87	80	93	85	79	90	83	78	70
2.50	99	91	85	97	90	84	93	87	83	74
3.00	102	96	90	100	94	89	96	91	87	79
4.00	107	101	96	104	99	95	100	96	92	83
5.00	109	104	100	107	102	99	102	99	96	87
ROOM INDEX	UF(total)									Direct
According to DIN EN 13032-2 2004			Suspended				SHRNOM = 1.25			

C Range: 0 - 360DEG
 C Interval: 5.0DEG
 Test Speed: HIGH
 Temperature:25.3DEG
 Operators:DAMIN
 Test Date:2023-8-8

γ Range: 0 - 90DEG
 γ Interval: 0.5DEG
 Test System:EVERFINE GO-2000A_V1 SYSTEM V2.0.286
 Humidity:65.0%
 Test Distance:13.420m [K=1.0000]
 Remarks: IL-PN195 4.000K

ISOCANDELA DIAGRAM

Test:U:229.9V I:0.1395A P:31.35W PF:0.9778 Lamp Flux:3896.71x1 lm		
NAME: IL-PN195 4.000K	TYPE:	WEIGHT:
SPEC.:	DIM.:	SERIAL No.:
MFR.: EVERFINE	SUR.:250*1150	PROTECTION ANGLE:

Conical surface Flux(90deg):

2081.6 lm

%lum = 53.4%

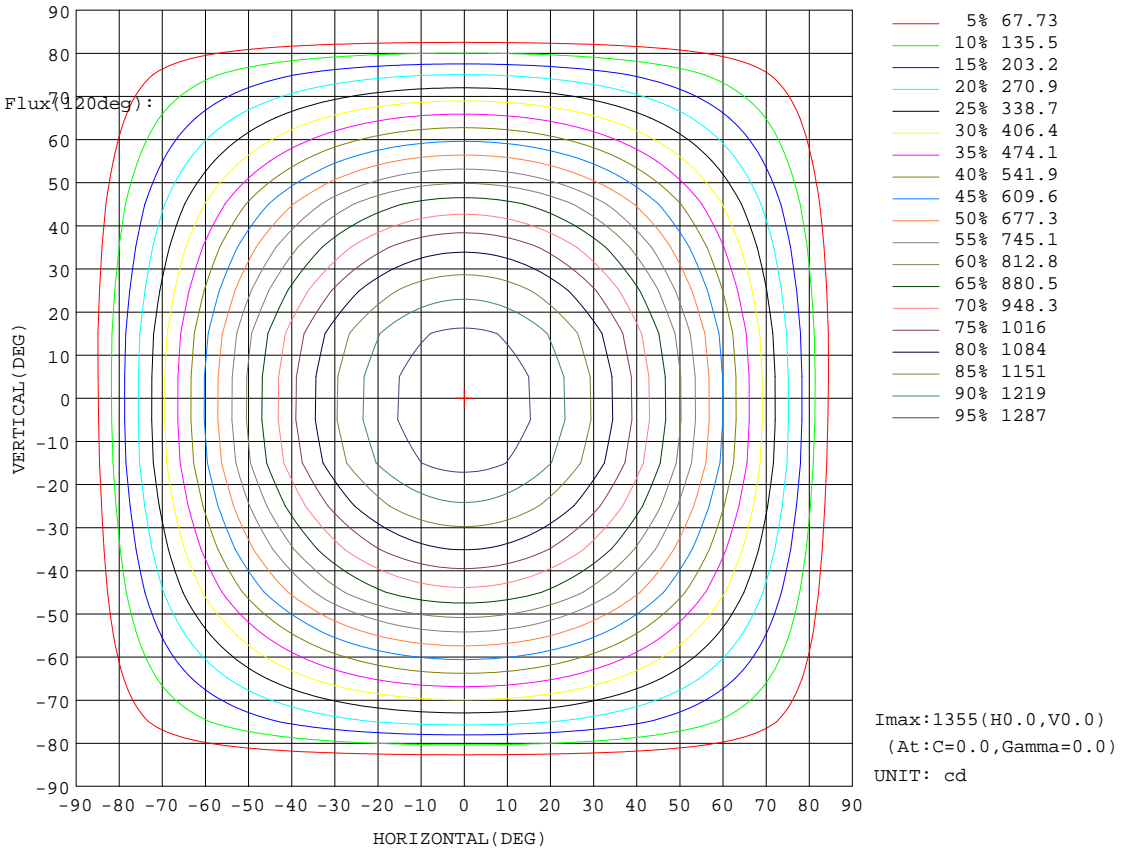
%lamp = 53.4%

Conical surface Flux(70deg):

3077.8 lm

%lum = 79.0%

%lamp = 79.0%

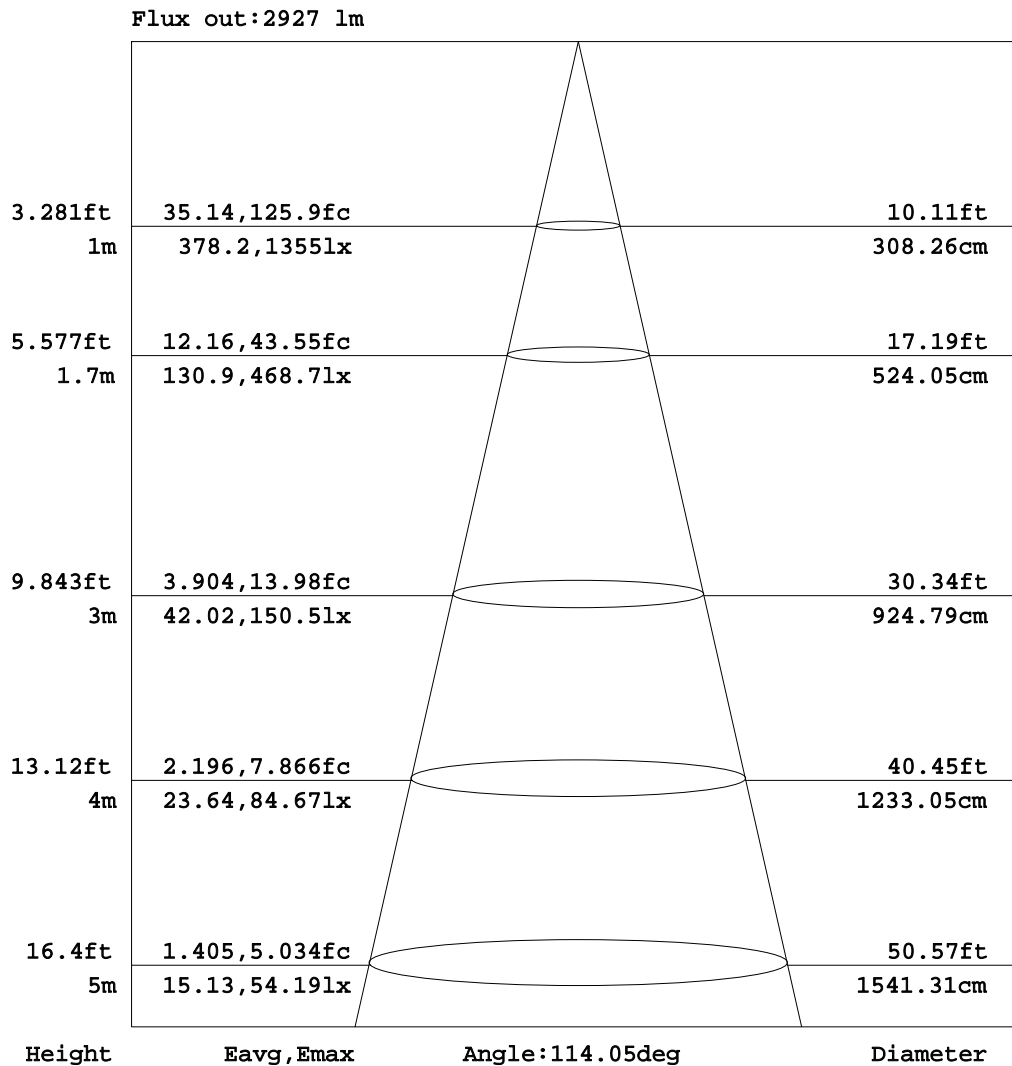


C Range: 0 - 360DEG
C Interval: 5.0DEG
Test Speed: HIGH
Temperature:25.3DEG
Operators:DAMIN
Test Date:2023-8-8

γ Range: 0 - 90DEG
γ Interval: 0.5DEG
Test System:EVERFINE GO-2000A_V1 SYSTEM V2.0.286
Humidity:65.0%
Test Distance:13.420m [K=1.0000]
Remarks: IL-PN195 4.000K

AAI Figure

Test:U:229.9V I:0.1395A P:31.35W PF:0.9778 Lamp Flux:3896.7lx1 lm		
NAME: IL-PN195 4.000K	TYPE:	WEIGHT:
SPEC.:	DIM.:	SERIAL No.:
MFR.: EVERFINE	SUR.:250*1150	PROTECTION ANGLE:



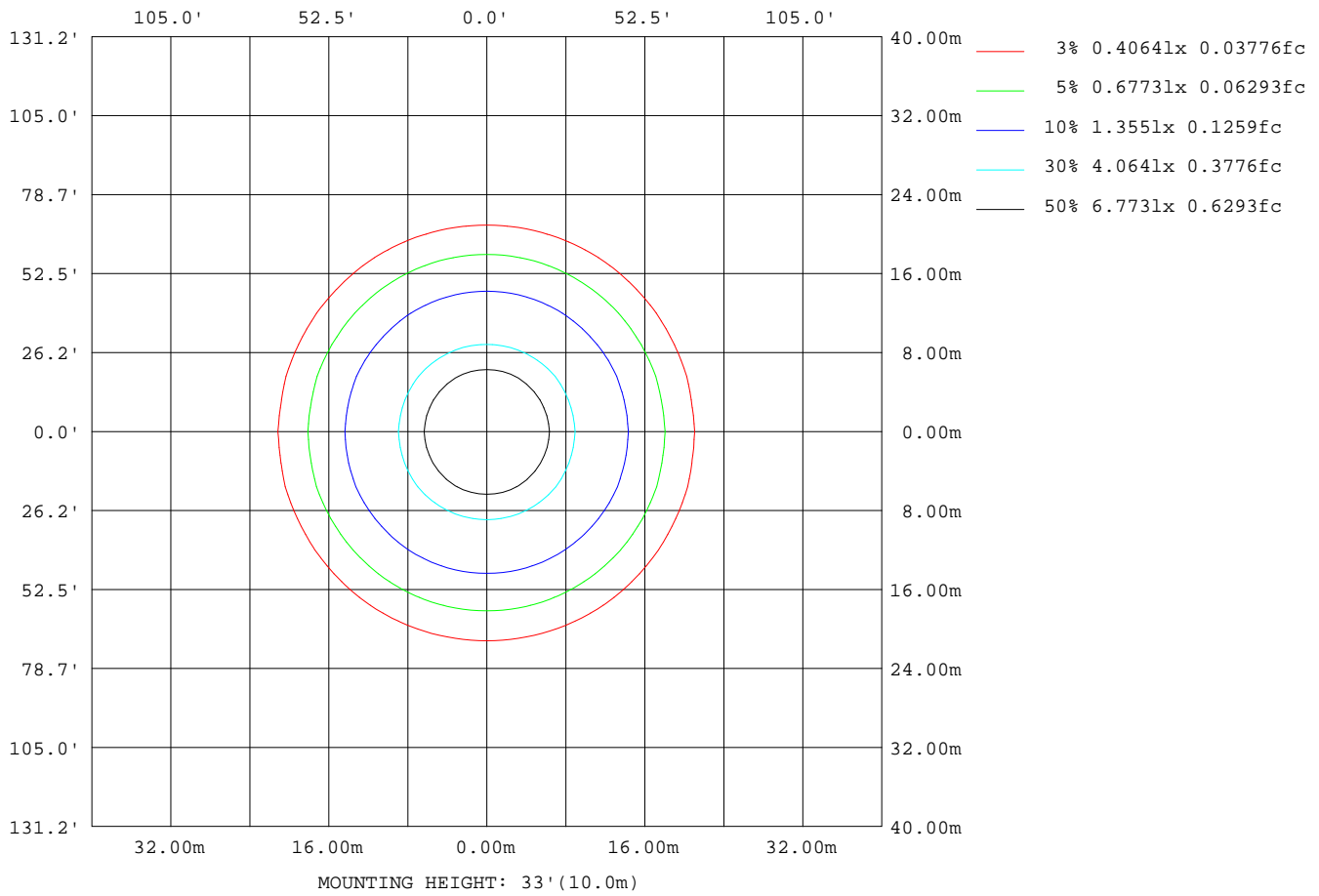
Note:The Curves indicate the illuminated area and the average illumination when the luminaire is at different distance.

C Range: 0 - 360DEG
 C Interval: 5.0DEG
 Test Speed: HIGH
 Temperature:25.3DEG
 Operators:DAMIN
 Test Date:2023-8-8

γ Range: 0 - 90DEG
 γ Interval: 0.5DEG
 Test System:EVERFINE GO-2000A_V1 SYSTEM V2.0.286
 Humidity:65.0%
 Test Distance:13.420m [K=1.0000]
 Remarks: IL-PN195 4.000K

ISOLUX DIAGRAM

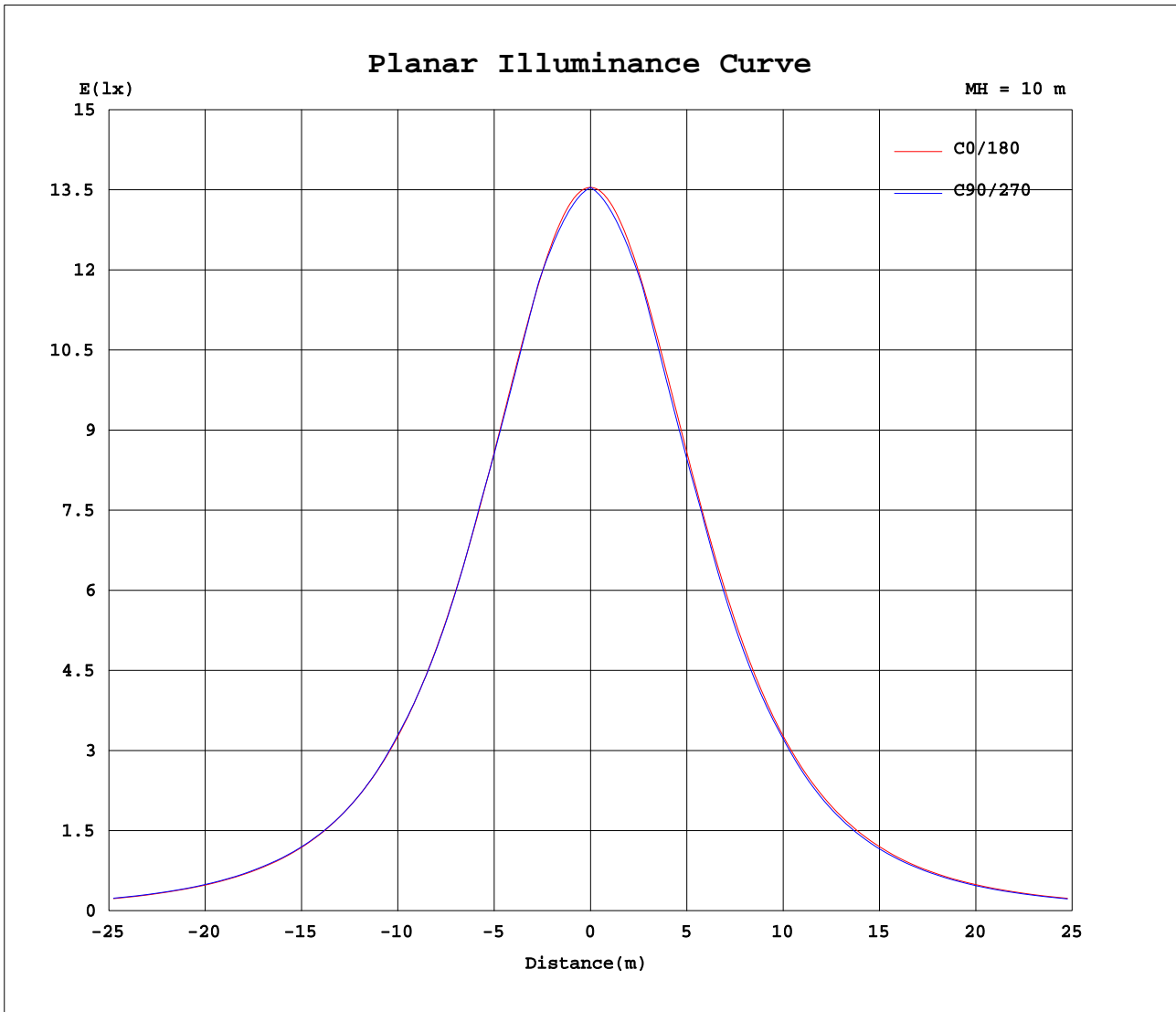
Test:U:229.9V I:0.1395A P:31.35W PF:0.9778 Lamp Flux:3896.7lx1 lm		
NAME: IL-PN195 4.000K	TYPE:	WEIGHT:
SPEC.:	DIM.:	SERIAL No.:
MFR.: EVERFINE	SUR.:250*1150	PROTECTION ANGLE:



C Range: 0 - 360DEG
 C Interval: 5.0DEG
 Test Speed: HIGH
 Temperature:25.3DEG
 Operators:DAMIN
 Test Date:2023-8-8

γ Range: 0 - 90DEG
 γ Interval: 0.5DEG
 Test System:EVERFINE GO-2000A_V1 SYSTEM V2.0.286
 Humidity:65.0%
 Test Distance:13.420m [K=1.0000]
 Remarks: IL-PN195 4.000K

Planar Illuminance Curve



C Range: 0 - 360DEG
 C Interval: 5.0DEG
 Test Speed: HIGH
 Temperature: 25.3DEG
 Operators: DAMIN
 Test Date: 2023-8-8

γ Range: 0 - 90DEG
 γ Interval: 0.5DEG
 Test System: EVERFINE GO-2000A_V1 SYSTEM V2.0.286
 Humidity: 65.0%
 Test Distance: 13.420m [K=1.0000]
 Remarks: IL-PN195 4.000K

LUMINOUS DISTRIBUTION INTENSITY DATA

Test:U:229.9V I:0.1395A P:31.35W PF:0.9778 Lamp Flux:3896.71x1 lm		
NAME: IL-PN195 4.000K	TYPE:	WEIGHT:
SPEC.:	DIM.:	SERIAL No.:
MFR.: EVERFINE	SUR.:250*1150	PROTECTION ANGLE:

Table--2

UNIT: cd

C(DEG) γ (DEG)	95	100	105	110	115	120	125	130	135	140	145	150	155	160	165	170	175	180	185	
0	1355	1355	1355	1355	1355	1355	1355	1355	1355	1355	1355	1355	1355	1355	1355	1355	1355	1355	1355	
5	1339	1339	1339	1339	1340	1340	1340	1340	1341	1341	1342	1343	1343	1344	1345	1346	1348	1349	1347	
10	1323	1323	1323	1323	1323	1322	1322	1322	1322	1322	1322	1322	1323	1324	1326	1327	1330	1332	1329	
15	1308	1307	1306	1305	1304	1302	1300	1299	1297	1296	1295	1294	1294	1295	1296	1298	1301	1305	1300	
20	1260	1260	1260	1261	1262	1263	1265	1268	1268	1264	1261	1258	1257	1256	1257	1259	1262	1266	1261	
25	1211	1211	1211	1210	1210	1210	1210	1211	1214	1217	1221	1215	1211	1208	1208	1209	1212	1217	1211	
30	1163	1162	1160	1159	1157	1155	1153	1152	1151	1152	1155	1159	1158	1153	1150	1149	1152	1158	1151	
35	1086	1086	1087	1088	1089	1091	1094	1089	1086	1084	1084	1085	1090	1089	1083	1081	1083	1089	1082	
40	1009	1008	1008	1008	1008	1008	1009	1011	1015	1012	1008	1006	1008	1014	1010	1005	1005	1012	1004	
45	931	930	929	927	926	924	923	922	923	925	929	923	921	923	929	920	919	926	918	
50	830	831	831	832	834	836	836	833	830	827	829	834	830	828	832	830	826	832	824	
55	729	729	729	729	729	730	731	733	733	730	727	728	732	729	727	730	724	731	722	
60	628	627	626	626	625	624	623	622	622	624	627	622	621	626	620	623	618	624	616	
65	516	516	516	516	516	516	516	515	513	512	512	514	512	510	513	509	509	512	507	
70	405	405	405	405	405	404	404	404	403	403	400	399	399	400	398	397	399	399	397	
75	294	294	294	294	294	294	293	293	292	291	291	290	288	287	288	286	286	287	285	
80	2.19	8.72	19.5	34.4	53.1	75.4	101	129	159	184	184	184	182	181	178	176	173	178	176	
85	0.00	0.00	0.00	0.00	0.00	0.00	0.00	0.00	0.00	0.00	0.00	0.00	0.00	37.4	75.5	80.1	74.0	64.3	64.9	70.2
90	0.00	0.00	0.00	0.00	0.00	0.00	0.00	0.00	0.00	0.00	0.00	0.00	0.00	0.00	0.00	0.00	0.00	0.87	0.00	

C Range: 0 - 360DEG
 C Interval: 5.0DEG
 Test Speed: HIGH
 Temperature:25.3DEG
 Operators:DAMIN
 Test Date:2023-8-8

γ Range: 0 - 90DEG
 γ Interval: 0.5DEG
 Test System:EVERFINE GO-2000A_V1 SYSTEM V2.0.286
 Humidity:65.0%
 Test Distance:13.420m [K=1.0000]
 Remarks: IL-PN195 4.000K

LUMINOUS DISTRIBUTION INTENSITY DATA

Test:U:229.9V I:0.1395A P:31.35W PF:0.9778 Lamp Flux:3896.71x1 lm		
NAME: IL-PN195 4.000K	TYPE:	WEIGHT:
SPEC.:	DIM.:	SERIAL No.:
MFR.: EVERFINE	SUR.:250*1150	PROTECTION ANGLE:

Table--3

UNIT: cd

C(DEG) γ (DEG)	190	195	200	205	210	215	220	225	230	235	240	245	250	255	260	265	270	275	280
0	1355	1355	1355	1355	1355	1355	1355	1355	1355	1355	1355	1355	1355	1355	1355	1355	1355	1355	1355
5	1346	1345	1343	1342	1341	1340	1340	1339	1338	1338	1337	1337	1337	1337	1336	1336	1336	1336	1336
10	1327	1324	1322	1321	1320	1319	1318	1318	1318	1317	1317	1318	1318	1318	1318	1318	1318	1318	1318
15	1297	1294	1292	1291	1290	1290	1291	1292	1293	1294	1295	1296	1297	1298	1299	1300	1300	1299	1299
20	1257	1254	1253	1252	1253	1255	1258	1261	1260	1257	1255	1253	1251	1250	1250	1249	1249	1249	1249
25	1206	1204	1204	1206	1209	1213	1208	1205	1202	1200	1199	1199	1198	1198	1198	1198	1198	1198	1198
30	1147	1146	1148	1152	1152	1146	1143	1141	1141	1141	1142	1143	1145	1146	1147	1147	1148	1148	1147
35	1078	1079	1084	1083	1077	1074	1074	1074	1077	1080	1077	1074	1072	1071	1070	1069	1069	1069	1069
40	1001	1005	1007	1000	997	997	1000	1002	997	994	992	991	991	990	990	990	990	990	989
45	917	923	916	912	913	918	912	909	907	907	907	908	909	910	911	911	911	911	910
50	826	826	820	821	823	817	814	814	817	819	818	815	813	811	810	809	809	809	809
55	726	722	721	723	717	715	716	718	716	713	711	710	708	708	707	707	707	706	706
60	619	614	618	612	611	614	610	607	605	606	605	605	604	605	605	605	604	604	604
65	505	507	503	503	503	500	498	498	498	498	497	496	495	495	494	494	493	493	493
70	393	393	393	391	389	388	389	388	387	387	386	385	384	384	383	383	382	382	382
75	283	283	281	280	280	279	279	278	277	277	276	275	274	273	272	272	271	271	271
80	177	175	176	175	175	174	173	149	120	93.8	70.0	49.3	31.9	18.1	8.08	2.02	0.00	2.02	8.05
85	71.1	75.6	70.3	35.0	0.00	0.00	0.00	0.00	0.00	0.00	0.00	0.00	0.00	0.00	0.00	0.00	0.00	0.00	0.00
90	0.00	0.00	0.00	0.00	0.00	0.00	0.00	0.00	0.00	0.00	0.00	0.00	0.00	0.00	0.00	0.00	0.00	0.00	0.00

C Range: 0 - 360DEG
 C Interval: 5.0DEG
 Test Speed: HIGH
 Temperature:25.3DEG
 Operators:DAMIN
 Test Date:2023-8-8

γ Range: 0 - 90DEG
 γ Interval: 0.5DEG
 Test System:EVERFINE GO-2000A_V1 SYSTEM V2.0.286
 Humidity:65.0%
 Test Distance:13.420m [K=1.0000]
 Remarks: IL-PN195 4.000K

LUMINOUS DISTRIBUTION INTENSITY DATA

Test:U:229.9V I:0.1395A P:31.35W PF:0.9778 Lamp Flux:3896.71x1 lm		
NAME: IL-PN195 4.000K	TYPE:	WEIGHT:
SPEC.:	DIM.:	SERIAL No.:
MFR.: EVERFINE	SUR.:250*1150	PROTECTION ANGLE:

Table--4

UNIT: cd

C(DEG) γ (DEG)	285	290	295	300	305	310	315	320	325	330	335	340	345	350	355				
0	1355	1355	1355	1355	1355	1355	1355	1355	1355	1355	1355	1355	1355	1355	1355				
5	1337	1337	1337	1337	1338	1338	1339	1340	1340	1341	1342	1343	1345	1346	1348				
10	1318	1317	1317	1317	1317	1317	1317	1318	1319	1319	1321	1322	1324	1326	1329				
15	1298	1297	1296	1294	1293	1292	1291	1290	1290	1290	1290	1292	1294	1296	1300				
20	1250	1251	1252	1253	1256	1259	1259	1256	1253	1252	1251	1251	1253	1256	1260				
25	1198	1198	1198	1198	1199	1200	1203	1206	1211	1207	1203	1202	1203	1205	1210				
30	1146	1144	1143	1141	1140	1139	1139	1140	1144	1149	1149	1145	1144	1145	1150				
35	1070	1071	1073	1076	1079	1075	1073	1071	1071	1074	1079	1079	1075	1076	1080				
40	989	989	990	991	992	995	1000	999	995	994	996	1002	1000	998	1001				
45	909	907	906	905	904	905	907	910	915	910	908	911	917	912	914				
50	810	811	812	815	816	813	812	812	814	821	817	814	819	819	819				
55	706	707	707	708	710	712	716	713	712	713	716	714	714	720	716				
60	603	603	602	602	602	603	604	606	610	605	605	611	607	612	609				
65	493	494	494	494	495	494	494	494	495	498	497	496	500	498	499				
70	382	382	383	383	383	383	384	384	384	383	385	385	384	385	388				
75	271	272	272	273	273	273	274	274	274	274	274	273	274	275	275				
80	18.0	31.6	48.8	69.1	92.3	118	145	167	168	169	169	169	166	167	166				
85	0.00	0.00	0.00	0.00	0.00	0.00	0.00	0.00	0.00	0.00	0.00	32.9	64.9	69.0	63.9	60.4			
90	0.00	0.00	0.00	0.00	0.00	0.00	0.00	0.00	0.00	0.00	0.00	0.00	0.00	0.00	0.00				

C Range: 0 - 360DEG
 C Interval: 5.0DEG
 Test Speed: HIGH
 Temperature:25.3DEG
 Operators:DAMIN
 Test Date:2023-8-8

γ Range: 0 - 90DEG
 γ Interval: 0.5DEG
 Test System:EVERFINE GO-2000A_V1 SYSTEM V2.0.286
 Humidity:65.0%
 Test Distance:13.420m [K=1.0000]
 Remarks: IL-PN195 4.000K

Photometric Data Table [cd]

G/C	0.0	5.0	10.0	15.0	20.0	25.0	30.0	35.0	40.0	45.0
0.0	1355	1355	1355	1355	1355	1355	1355	1355	1355	1355
2.5	1353	1353	1352	1351	1351	1350	1350	1349	1349	1348
5.0	1349	1348	1347	1345	1344	1343	1343	1342	1341	1341
7.5	1342	1340	1338	1337	1335	1334	1333	1333	1332	1332
10.0	1332	1330	1327	1325	1324	1323	1322	1322	1321	1321
12.5	1320	1317	1314	1312	1311	1310	1309	1309	1309	1310
15.0	1305	1301	1298	1296	1294	1294	1294	1294	1295	1296
17.5	1287	1282	1279	1277	1276	1276	1276	1278	1280	1282
20.0	1266	1261	1258	1256	1255	1256	1257	1260	1263	1267
22.5	1243	1237	1234	1232	1232	1234	1236	1240	1245	1242
25.0	1217	1211	1208	1206	1207	1209	1214	1219	1215	1212
27.5	1188	1182	1179	1178	1180	1184	1189	1187	1184	1182
30.0	1158	1151	1148	1148	1151	1156	1157	1153	1151	1151
32.5	1124	1117	1115	1115	1119	1126	1121	1118	1117	1118
35.0	1089	1082	1079	1081	1086	1087	1083	1082	1083	1086
37.5	1051	1043	1041	1044	1051	1047	1044	1045	1048	1052
40.0	1011	1003	1001	1005	1010	1005	1004	1007	1012	1015
42.5	968.0	960.4	959.6	965.2	964.9	962.1	963.4	968.2	972.6	968.3
45.0	923.4	915.8	915.9	923.0	918.9	918.2	921.9	928.8	924.4	921.9
47.5	877.4	869.6	870.5	876.3	871.9	873.3	879.5	879.2	875.9	874.8
50.0	829.1	821.4	823.6	825.6	823.0	827.9	833.1	828.4	826.9	827.9
52.5	778.6	771.5	774.9	774.1	772.5	780.4	777.3	777.3	778.1	781.2
55.0	724.0	718.4	725.1	721.5	722.9	726.9	726.3	726.3	729.3	733.4
57.5	670.6	665.3	673.5	668.1	672.7	672.2	671.7	675.4	679.8	677.2
60.0	616.2	611.7	616.7	614.4	620.5	616.9	618.9	624.7	622.6	621.5
62.5	560.7	557.2	559.9	560.8	562.6	562.4	567.2	567.3	566.1	566.4
65.0	504.5	501.7	502.9	507.4	505.6	508.4	511.0	509.9	510.4	511.9
67.5	447.7	446.3	446.3	450.1	449.8	454.7	453.1	453.7	455.5	458.1
70.0	390.7	390.3	390.7	391.7	394.9	396.2	396.5	398.6	401.2	401.8
72.5	334.2	334.2	336.3	335.4	338.4	339.7	341.7	343.9	344.9	345.9
75.0	278.4	277.0	279.2	281.3	282.4	285.2	287.3	288.6	289.8	290.8
77.5	223.7	220.4	221.8	225.5	229.0	231.8	233.3	234.6	235.6	236.4
80.0	168.7	163.1	167.1	172.5	177.2	179.4	180.9	181.8	182.3	158.2
82.5	111.6	106.6	114.5	122.5	126.8	129.0	125.9	90.43	55.38	21.45
85.0	55.88	56.03	68.26	75.51	72.18	36.29	0	0	0	0
87.5	10.72	19.96	25.27	0	0	0	0	0	0	0
90.0	0.6410	0	0	0	0	0	0	0	0	0
G/C	50.0	55.0	60.0	65.0	70.0	75.0	80.0	85.0	90.0	95.0
0.0	1355	1355	1355	1355	1355	1355	1355	1355	1355	1355
2.5	1348	1348	1348	1347	1347	1347	1347	1347	1347	1347
5.0	1340	1340	1340	1340	1339	1339	1339	1339	1339	1339
7.5	1332	1331	1331	1331	1331	1331	1331	1331	1331	1331
10.0	1321	1322	1322	1322	1323	1323	1323	1323	1324	1323
12.5	1310	1311	1312	1313	1314	1315	1315	1315	1316	1316
15.0	1298	1300	1302	1303	1305	1306	1307	1308	1308	1308
17.5	1285	1288	1289	1287	1286	1285	1284	1284	1284	1284
20.0	1267	1265	1263	1262	1261	1260	1260	1260	1260	1260
22.5	1239	1237	1236	1236	1235	1235	1235	1235	1235	1235
25.0	1211	1210	1209	1210	1210	1211	1211	1211	1211	1211
27.5	1181	1181	1182	1183	1185	1186	1186	1187	1187	1187
30.0	1151	1153	1155	1157	1159	1161	1162	1163	1163	1163
32.5	1121	1123	1127	1130	1128	1126	1125	1125	1124	1125
35.0	1089	1094	1091	1089	1088	1087	1086	1086	1086	1086
37.5	1055	1052	1050	1048	1047	1047	1047	1047	1047	1047
40.0	1011	1009	1008	1007	1007	1007	1008	1008	1008	1009
42.5	966.3	965.3	965.3	966.1	966.9	967.9	968.8	969.5	969.8	969.8
45.0	921.2	921.6	923.0	924.9	926.7	928.2	929.7	930.7	931.2	931.0
47.5	875.8	878.0	880.7	883.7	883.1	881.6	880.9	880.6	880.6	880.9
50.0	830.7	834.3	834.4	832.5	831.5	830.4	830.2	830.0	830.0	830.2
52.5	785.5	783.1	781.3	780.3	779.3	779.4	779.4	779.4	779.4	779.6
55.0	730.4	729.1	728.4	728.2	728.2	728.3	728.5	728.8	728.9	728.9
57.5	675.8	675.5	675.7	676.1	676.7	677.2	677.7	678.1	678.3	678.3
60.0	621.5	622.1	623.1	624.2	625.3	626.3	627.0	627.5	627.7	627.6
62.5	567.6	569.0	570.7	572.3	572.1	572.0	572.0	572.0	572.1	572.1
65.0	514.0	515.8	515.9	516.0	516.1	516.2	516.2	516.2	516.3	516.4
67.5	458.9	459.2	459.6	459.9	460.2	460.4	460.4	460.5	460.6	460.7
70.0	402.6	403.1	403.7	404.1	404.4	404.6	404.7	404.8	404.9	405.0
72.5	346.8	347.5	348.0	348.4	348.8	349.0	349.0	349.1	349.2	349.3
75.0	291.6	292.2	292.6	293.0	293.3	293.3	293.4	293.4	293.5	293.6
77.5	236.9	237.3	217.7	196.9	179.3	165.2	155.0	148.8	146.8	148.9
80.0	128.2	100.3	75.09	52.96	34.31	19.48	8.713	2.186	0	2.188
82.5	0	0	0	0	0	0	0	0	0	0
85.0	0	0	0	0	0	0	0	0	0	0

C Range: 0 - 360DEG
 C Interval: 5.0DEG
 Test Speed: HIGH
 Temperature: 25.3DEG
 Operators: DAMIN
 Test Date: 2023-8-8

γ Range: 0 - 90DEG
 γ Interval: 0.5DEG
 Test System: EVERFINE GO-2000A_V1 SYSTEM V2.0.286
 Humidity: 65.0%
 Test Distance: 13.420m [K=1.0000]
 Remarks: IL-PN195 4.000K

Photometric Data Table [cd]

87.5	0	0	0	0	0	0	0	0	0	0
90.0	0	0	0	0	0	0	0	0	0	0
G/C	100.0	105.0	110.0	115.0	120.0	125.0	130.0	135.0	140.0	145.0
0.0	1355	1355	1355	1355	1355	1355	1355	1355	1355	1355
2.5	1347	1347	1347	1347	1347	1348	1348	1348	1349	1349
5.0	1339	1339	1339	1340	1340	1340	1340	1341	1341	1342
7.5	1331	1331	1331	1331	1331	1331	1332	1332	1332	1333
10.0	1323	1323	1323	1323	1322	1322	1322	1322	1322	1322
12.5	1315	1315	1314	1313	1313	1312	1311	1310	1309	1309
15.0	1307	1306	1305	1304	1302	1300	1299	1297	1296	1295
17.5	1284	1285	1286	1288	1289	1288	1286	1283	1281	1279
20.0	1260	1260	1261	1262	1263	1265	1268	1268	1264	1261
22.5	1235	1236	1236	1236	1237	1238	1240	1243	1246	1242
25.0	1211	1211	1210	1210	1210	1210	1211	1214	1217	1221
27.5	1186	1186	1185	1185	1182	1182	1182	1183	1185	1189
30.0	1162	1160	1159	1157	1155	1153	1152	1151	1152	1155
32.5	1125	1126	1127	1129	1126	1124	1121	1119	1119	1120
35.0	1086	1087	1088	1089	1091	1094	1089	1086	1084	1084
37.5	1047	1047	1048	1048	1050	1052	1055	1052	1049	1046
40.0	1008	1008	1008	1008	1008	1009	1011	1015	1012	1008
42.5	969.2	968.5	967.4	966.7	966.0	965.8	966.7	968.9	972.9	968.9
45.0	930.2	929.1	927.3	925.9	924.1	922.7	922.3	922.7	925.0	929.1
47.5	881.4	882.5	884.1	885.1	882.0	879.5	877.5	876.5	876.1	879.5
50.0	830.5	831.2	832.4	833.9	836.0	836.3	832.8	829.5	827.2	828.9
52.5	779.7	780.0	780.6	781.4	782.8	785.2	788.2	781.8	778.5	778.0
55.0	728.8	728.7	728.8	729.1	729.7	730.9	733.3	733.5	730.0	727.3
57.5	678.0	677.5	677.2	676.8	676.8	677.2	677.6	677.6	680.7	676.9
60.0	627.1	626.4	625.6	624.7	624.0	623.5	622.5	622.3	623.8	626.7
62.5	572.1	572.1	572.3	572.4	571.4	570.0	568.3	567.4	567.5	569.1
65.0	516.4	516.3	516.4	516.3	516.5	516.5	514.9	513.0	511.7	511.8
67.5	460.6	460.5	460.5	460.4	460.2	460.1	459.9	459.3	456.9	455.5
70.0	404.9	404.8	404.8	404.7	404.4	404.1	403.6	403.0	402.5	400.4
72.5	349.3	349.2	349.2	349.1	348.9	348.6	348.0	347.2	346.4	345.7
75.0	293.6	293.6	293.7	293.7	293.6	293.3	292.8	292.1	291.4	290.6
77.5	155.1	165.4	179.6	197.4	218.6	238.5	238.1	237.8	237.4	236.8
80.0	8.721	19.50	34.38	53.11	75.39	100.9	128.9	159.4	184.2	184.1
82.5	0	0	0	0	0	0	0	21.63	55.99	91.78
85.0	0	0	0	0	0	0	0	0	0	0
87.5	0	0	0	0	0	0	0	0	0	0
90.0	0	0	0	0	0	0	0	0	0	0
G/C	150.0	155.0	160.0	165.0	170.0	175.0	180.0	185.0	190.0	195.0
0.0	1355	1355	1355	1355	1355	1355	1355	1355	1355	1355
2.5	1350	1350	1351	1351	1352	1353	1353	1352	1352	1351
5.0	1343	1343	1344	1345	1346	1348	1349	1347	1346	1345
7.5	1334	1335	1336	1337	1338	1340	1342	1340	1338	1336
10.0	1322	1323	1324	1326	1327	1330	1332	1329	1327	1324
12.5	1309	1310	1311	1312	1314	1317	1320	1316	1313	1310
15.0	1294	1294	1295	1296	1298	1301	1305	1300	1297	1294
17.5	1277	1277	1277	1278	1279	1282	1287	1282	1278	1275
20.0	1258	1257	1256	1257	1259	1262	1266	1261	1257	1254
22.5	1238	1235	1233	1233	1235	1238	1243	1237	1233	1230
25.0	1215	1211	1208	1208	1209	1212	1217	1211	1206	1204
27.5	1191	1186	1182	1180	1180	1183	1189	1182	1178	1176
30.0	1159	1158	1153	1150	1149	1152	1158	1151	1147	1146
32.5	1123	1129	1122	1118	1116	1119	1125	1117	1114	1113
35.0	1085	1090	1089	1083	1081	1083	1089	1082	1078	1079
37.5	1047	1050	1055	1048	1044	1045	1052	1044	1041	1043
40.0	1006	1008	1014	1010	1005	1005	1012	1004	1001	1005
42.5	965.2	965.0	969.1	969.9	963.4	963.2	969.8	961.5	960.0	964.8
45.0	923.2	920.8	923.0	928.7	920.5	919.2	925.6	917.5	916.7	923.3
47.5	880.4	875.6	876.0	882.3	875.7	873.3	879.5	871.5	872.0	876.9
50.0	833.8	829.9	827.6	832.1	829.7	825.8	831.6	823.9	826.0	826.4
52.5	780.9	783.2	778.6	780.9	781.9	776.0	782.1	774.1	778.0	775.3
55.0	727.7	732.4	728.6	727.4	730.1	724.3	731.0	722.2	726.1	721.7
57.5	674.7	676.5	678.1	673.3	678.5	671.8	677.9	669.8	674.4	667.5
60.0	622.0	621.0	625.7	619.9	622.6	618.2	623.7	616.2	618.5	614.2
62.5	569.8	566.1	567.6	566.7	566.0	563.8	568.3	561.8	561.9	560.9
65.0	513.6	512.3	510.5	513.3	509.2	508.8	512.3	506.8	505.2	507.4
67.5	455.6	457.9	454.2	456.4	452.9	453.7	456.2	451.7	449.2	450.5
70.0	399.1	399.4	399.7	398.0	396.9	398.6	399.4	396.6	392.7	392.7
72.5	344.0	342.7	343.7	341.6	342.2	343.3	341.9	341.6	338.7	336.4
75.0	289.6	288.2	287.1	287.9	285.6	286.2	286.7	284.8	283.1	283.4
77.5	235.8	234.8	233.2	232.0	229.5	229.6	232.6	229.9	228.7	228.2

C Range: 0 - 360DEG
 C Interval: 5.0DEG
 Test Speed: HIGH
 Temperature: 25.3DEG
 Operators: DAMIN
 Test Date: 2023-8-8

γ Range: 0 - 90DEG
 γ Interval: 0.5DEG
 Test System: EVERFINE GO-2000A_V1 SYSTEM V2.0.286
 Humidity: 65.0%
 Test Distance: 13.420m [K=1.0000]
 Remarks: IL-PN195 4.000K

Photometric Data Table [cd]

80.0	183.5	182.5	181.1	178.2	175.8	172.6	178.2	176.3	177.0	174.5
82.5	128.4	132.1	130.7	127.5	121.9	115.8	121.5	122.0	121.5	123.3
85.0	0	37.36	75.49	80.10	73.98	64.29	64.94	70.20	71.13	75.61
87.5	0	0	0	0	28.82	23.54	16.10	22.48	26.41	0
90.0	0	0	0	0	0	0	0.8739	0	0	0
G/C	200.0	205.0	210.0	215.0	220.0	225.0	230.0	235.0	240.0	245.0
0.0	1355	1355	1355	1355	1355	1355	1355	1355	1355	1355
2.5	1350	1350	1349	1349	1348	1348	1347	1347	1346	1346
5.0	1343	1342	1341	1340	1340	1339	1338	1338	1337	1337
7.5	1334	1333	1331	1330	1330	1329	1328	1328	1328	1327
10.0	1322	1321	1320	1319	1318	1318	1318	1317	1317	1318
12.5	1308	1307	1306	1305	1305	1305	1306	1306	1307	1307
15.0	1292	1291	1290	1290	1291	1292	1293	1294	1295	1296
17.5	1274	1273	1273	1274	1275	1277	1279	1281	1281	1279
20.0	1253	1252	1253	1255	1258	1261	1260	1257	1255	1253
22.5	1229	1230	1232	1235	1239	1235	1231	1229	1227	1226
25.0	1204	1206	1209	1213	1208	1205	1202	1200	1199	1199
27.5	1177	1180	1184	1181	1176	1173	1172	1171	1171	1171
30.0	1148	1152	1152	1146	1143	1141	1141	1141	1142	1143
32.5	1117	1122	1115	1111	1109	1108	1109	1111	1113	1115
35.0	1084	1083	1077	1074	1074	1074	1077	1080	1077	1074
37.5	1049	1042	1038	1036	1037	1040	1042	1037	1035	1033
40.0	1007	1000	997.2	997.4	1000	1002	997.2	994.0	992.2	991.1
42.5	962.4	957.0	955.7	958.0	960.5	955.5	952.4	950.4	949.7	949.5
45.0	916.2	912.4	913.3	917.7	912.2	908.9	907.2	906.9	907.1	908.0
47.5	868.6	867.1	870.1	868.0	863.0	862.1	862.1	863.1	864.6	866.3
50.0	820.3	820.8	823.3	817.0	814.0	814.2	817.1	819.2	818.0	815.0
52.5	771.1	774.2	770.2	766.0	765.0	766.2	772.3	767.5	764.5	762.2
55.0	721.1	723.0	717.0	715.1	716.1	718.2	716.2	713.4	711.3	709.6
57.5	670.6	667.3	664.0	664.4	666.7	662.3	660.3	659.5	658.0	657.0
60.0	618.2	612.0	611.2	614.2	609.9	606.9	605.4	605.6	604.9	604.6
62.5	560.2	557.0	559.0	556.6	553.7	552.0	551.4	552.0	552.0	552.1
65.0	503.0	503.1	502.9	499.7	498.0	497.7	498.0	498.2	497.1	496.2
67.5	447.0	449.0	445.1	443.5	443.3	443.9	443.2	442.2	441.3	440.6
70.0	392.8	390.8	388.8	388.5	389.0	388.1	387.4	386.6	385.8	385.1
72.5	337.0	334.4	334.0	334.0	333.3	332.8	332.1	331.4	330.6	329.8
75.0	280.9	280.2	280.0	279.5	278.9	278.2	277.4	276.5	275.6	274.7
77.5	227.4	227.2	226.6	226.0	225.3	224.2	223.1	222.0	203.1	183.3
80.0	175.6	175.2	174.8	173.8	172.5	148.8	120.2	93.81	70.05	49.32
82.5	125.0	125.0	120.3	85.93	52.34	20.19	0	0	0	0
85.0	70.34	34.99	0	0	0	0	0	0	0	0
87.5	0	0	0	0	0	0	0	0	0	0
90.0	0	0	0	0	0	0	0	0	0	0
G/C	250.0	255.0	260.0	265.0	270.0	275.0	280.0	285.0	290.0	295.0
0.0	1355	1355	1355	1355	1355	1355	1355	1355	1355	1355
2.5	1346	1346	1346	1345	1346	1346	1346	1346	1346	1346
5.0	1337	1337	1336	1336	1336	1336	1336	1337	1337	1337
7.5	1327	1327	1327	1327	1327	1327	1327	1327	1327	1327
10.0	1318	1318	1318	1318	1318	1318	1318	1318	1317	1317
12.5	1308	1308	1309	1309	1309	1308	1308	1308	1307	1307
15.0	1297	1298	1299	1300	1300	1299	1299	1298	1297	1296
17.5	1277	1276	1275	1275	1274	1274	1275	1276	1277	1278
20.0	1251	1250	1250	1249	1249	1249	1249	1250	1251	1252
22.5	1225	1224	1224	1224	1224	1224	1224	1224	1224	1225
25.0	1198	1198	1198	1198	1198	1198	1198	1198	1198	1198
27.5	1172	1172	1173	1173	1173	1173	1172	1172	1171	1170
30.0	1145	1146	1147	1147	1148	1148	1147	1146	1144	1143
32.5	1112	1111	1109	1109	1108	1109	1109	1110	1112	1115
35.0	1072	1071	1070	1069	1069	1069	1069	1070	1071	1073
37.5	1031	1031	1030	1029	1030	1029	1029	1030	1030	1032
40.0	990.6	990.4	990.1	990.0	990.1	989.8	989.4	989.4	989.4	989.8
42.5	949.9	950.2	950.4	950.4	950.6	950.1	949.5	949.0	948.3	947.8
45.0	909.2	909.9	910.7	910.9	911.2	910.5	909.6	908.6	907.3	905.8
47.5	865.0	862.8	861.3	860.3	860.1	859.9	860.2	861.5	863.0	863.8
50.0	812.7	811.1	809.9	809.1	808.9	808.7	808.9	809.7	810.8	812.3
52.5	760.6	759.4	758.5	758.0	757.8	757.6	757.6	758.1	758.6	759.6
55.0	708.5	707.8	707.2	706.9	706.7	706.4	706.3	706.4	706.5	707.1
57.5	656.5	656.2	655.9	655.7	655.5	655.3	655.0	654.8	654.6	654.6
60.0	604.5	604.6	604.6	604.6	604.4	604.1	603.7	603.2	602.7	602.2
62.5	551.1	550.3	549.7	549.2	548.9	548.8	548.8	549.0	549.3	549.7
65.0	495.4	494.7	494.1	493.7	493.4	493.2	493.2	493.3	493.6	493.8
67.5	439.9	439.2	438.6	438.2	437.9	437.7	437.7	437.8	437.9	438.1
70.0	384.4	383.8	383.2	382.7	382.4	382.2	382.2	382.3	382.4	382.6

C Range: 0 - 360DEG
 C Interval: 5.0DEG
 Test Speed: HIGH
 Temperature: 25.3DEG
 Operators: DAMIN
 Test Date: 2023-8-8

γ Range: 0 - 90DEG
 γ Interval: 0.5DEG
 Test System: EVERFINE GO-2000A_V1 SYSTEM V2.0.286
 Humidity: 65.0%
 Test Distance: 13.420m [K=1.0000]
 Remarks: IL-PN195 4.000K

Photometric Data Table [cd]

72.5	329.1	328.4	327.7	327.3	326.9	326.7	326.7	326.8	327.0	327.3
75.0	273.9	273.0	272.3	271.8	271.4	271.2	271.2	271.4	271.7	272.2
77.5	166.7	153.4	143.7	137.8	135.7	137.5	143.1	152.4	165.2	181.4
80.0	31.90	18.08	8.078	2.025	0	2.020	8.045	17.97	31.63	48.79
82.5	0	0	0	0	0	0	0	0	0	0
85.0	0	0	0	0	0	0	0	0	0	0
87.5	0	0	0	0	0	0	0	0	0	0
90.0	0	0	0	0	0	0	0	0	0	0
G/C	300.0	305.0	310.0	315.0	320.0	325.0	330.0	335.0	340.0	345.0
0.0	1355	1355	1355	1355	1355	1355	1355	1355	1355	1355
2.5	1346	1347	1347	1347	1348	1349	1349	1350	1350	1351
5.0	1337	1338	1338	1339	1340	1340	1341	1342	1343	1345
7.5	1328	1328	1328	1329	1329	1330	1331	1332	1334	1336
10.0	1317	1317	1317	1317	1318	1319	1319	1321	1322	1324
12.5	1306	1305	1305	1305	1305	1305	1305	1307	1308	1310
15.0	1294	1293	1292	1291	1290	1290	1290	1290	1292	1294
17.5	1280	1280	1277	1275	1274	1272	1272	1272	1273	1275
20.0	1253	1256	1259	1259	1256	1253	1252	1251	1251	1253
22.5	1226	1228	1230	1233	1237	1233	1230	1228	1228	1229
25.0	1198	1199	1200	1203	1206	1211	1207	1203	1202	1203
27.5	1170	1170	1170	1171	1174	1178	1181	1177	1174	1174
30.0	1141	1140	1139	1139	1140	1144	1149	1149	1145	1144
32.5	1112	1110	1108	1106	1106	1108	1112	1118	1113	1111
35.0	1076	1079	1075	1073	1071	1071	1074	1079	1079	1075
37.5	1033	1036	1041	1039	1035	1034	1034	1038	1044	1039
40.0	990.6	992.4	995.5	1000	998.6	995.0	993.9	996.0	1002	999.8
42.5	947.7	948.4	950.3	953.4	958.8	955.7	952.4	952.7	957.1	959.1
45.0	904.7	904.2	904.6	906.5	910.2	915.5	910.2	908.3	910.8	916.8
47.5	861.6	860.1	858.8	859.0	861.0	865.6	867.4	863.1	863.6	869.8
50.0	814.8	815.6	813.0	811.7	811.7	814.4	820.7	817.5	814.4	819.0
52.5	761.4	763.9	767.2	764.3	762.4	763.1	767.2	769.6	763.9	767.2
55.0	708.1	709.6	712.3	715.9	713.2	711.7	713.5	716.3	713.7	714.4
57.5	654.9	655.6	657.2	659.5	663.3	660.6	658.8	660.8	663.3	660.7
60.0	601.9	601.9	602.5	603.6	606.0	609.9	605.4	605.4	610.5	606.9
62.5	549.2	548.5	548.2	548.4	549.4	552.1	553.8	550.7	552.9	553.2
65.0	494.3	495.0	494.3	493.6	493.7	494.6	497.5	497.0	495.9	499.6
67.5	438.5	438.9	439.3	439.6	438.7	438.5	439.7	443.2	440.0	442.3
70.0	382.9	383.2	383.4	383.8	384.3	383.5	383.2	384.6	384.5	384.2
72.5	327.6	328.0	328.1	328.4	328.7	328.9	328.4	328.2	328.8	327.9
75.0	272.6	273.1	273.4	273.7	274.0	274.2	274.2	273.6	273.0	274.5
77.5	200.5	218.5	219.1	219.7	220.3	220.7	220.7	220.6	220.0	219.5
80.0	69.14	92.30	117.8	145.2	167.4	168.3	168.8	168.7	168.6	166.3
82.5	0	0	0	19.68	50.72	82.65	114.6	118.6	118.4	115.8
85.0	0	0	0	0	0	0	0	32.86	64.89	69.03
87.5	0	0	0	0	0	0	0	0	0	0
90.0	0	0	0	0	0	0	0	0	0	0
G/C	350.0	355.0								
0.0	1355	1355								
2.5	1352	1352								
5.0	1346	1348								
7.5	1338	1340								
10.0	1326	1329								
12.5	1313	1316								
15.0	1296	1300								
17.5	1278	1282								
20.0	1256	1260								
22.5	1232	1236								
25.0	1205	1210								
27.5	1176	1181								
30.0	1145	1150								
32.5	1111	1116								
35.0	1076	1080								
37.5	1038	1042								
40.0	997.6	1001								
42.5	955.6	958.4								
45.0	911.8	913.7								
47.5	866.1	867.4								
50.0	819.0	819.1								
52.5	770.3	769.1								
55.0	720.2	715.9								
57.5	668.3	662.9								
60.0	611.6	609.1								
62.5	554.6	554.5								

C Range: 0 - 360DEG
 C Interval: 5.0DEG
 Test Speed: HIGH
 Temperature: 25.3DEG
 Operators: DAMIN
 Test Date: 2023-8-8

γ Range: 0 - 90DEG
 γ Interval: 0.5DEG
 Test System: EVERFINE GO-2000A_V1 SYSTEM V2.0.286
 Humidity: 65.0%
 Test Distance: 13.420m [K=1.0000]
 Remarks: IL-PN195 4.000K

Photometric Data Table [cd]

65.0	497.6	499.1
67.5	441.1	443.6
70.0	385.3	387.6
72.5	330.9	331.4
75.0	274.7	274.6
77.5	219.5	219.9
80.0	167.0	166.4
82.5	112.6	112.5
85.0	63.94	60.42
87.5	21.61	16.84
90.0	0	0

C Range: 0 - 360DEG
C Interval: 5.0DEG
Test Speed: HIGH
Temperature: 25.3DEG
Operators: DAMIN
Test Date: 2023-8-8

γ Range: 0 - 90DEG
 γ Interval: 0.5DEG
Test System: EVERFINE GO-2000A_V1 SYSTEM V2.0.286
Humidity: 65.0%
Test Distance: 13.420m [K=1.0000]
Remarks: IL-PN195 4.000K